

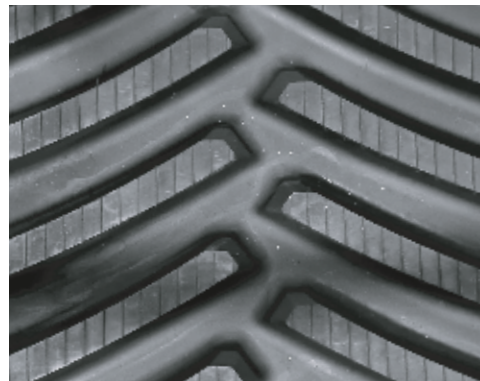
POPULAR SIZES & TREAD PATTERNS



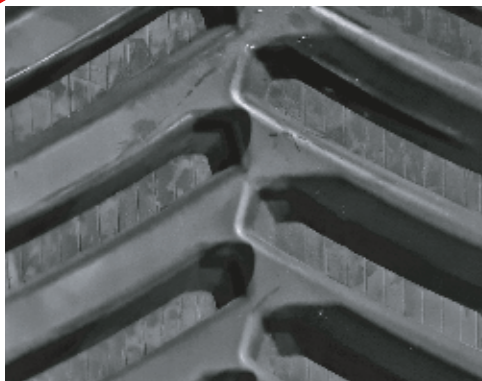
30" JOHN DEERE 8RT



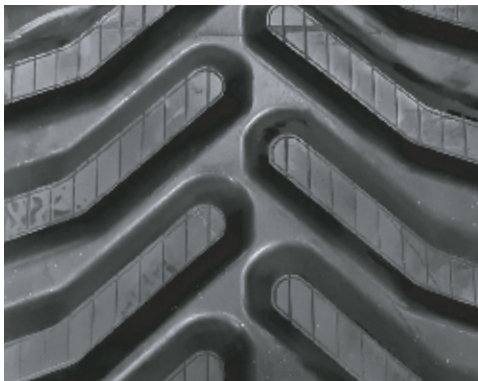
30" JOHN DEERE 9000T



36" JOHN DEERE 9RX



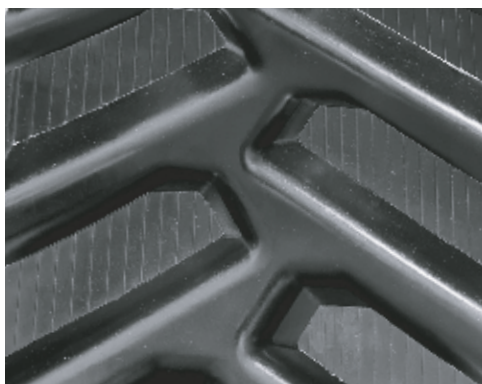
24" CHALLENGER
35/34/55



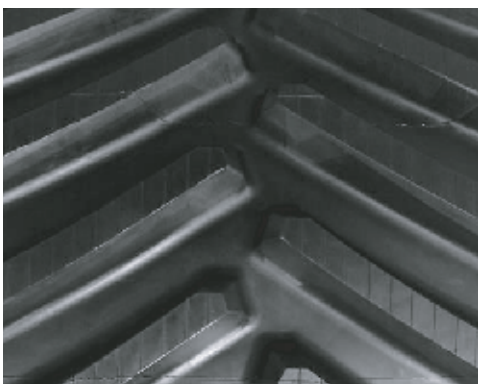
24" CHALLENGER
MT700



30" CHALLENGER
MT800



18" CASE ROWCROP



30" CASE QUADTRAC



35" CLAAS

Most sizes in stock and available for next day dispatch

NSW Warehouse: 1429 Yass Valley Way, Yass NSW 2582

WA Warehouse: 5 Tipping Road, Kewdale WA 6105



**MANUFACTURED FOR
A WIDE RANGE OF
MACHINES**

 **TANK TUFF**®

02 6226 4370

www.globaltrackwarehouse.com
aus@globaltrackwarehouse.com



PREMIUM AGRICULTURAL RUBBER TRACKS AND MID-ROLLERS

TRACTORS • COMBINES • GRAIN CARTS



TANK TUFF[®]

PREMIUM AGRICULTURAL RUBBER TRACKS



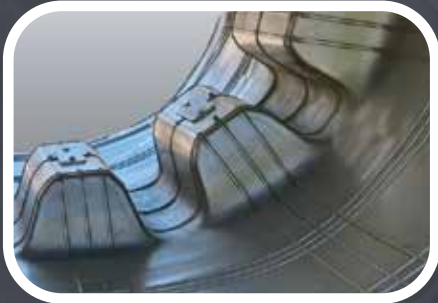
One-Step Vulcanization

All TankTuff tracks are vulcanized with our one-step process. This ensures that there is no weak point where the tread bars and drive lugs bond to the track.



Stronger Tread Bars

Our specially designed tread-bars, natural rubber compounds and one-step vulcanization process results in the strongest and most durable tread bars available.



Reinforced Drive Lugs

The combination of the one-step process and our armor strengthened lug system ensures your tread lugs do not tear and are less prone to wear than the competition.

4 YEAR WARRANTY

Friction Drive Tracks - 4,000 Hours*
Positive Drive Tracks - 2,000 Hours*

*Terms and Conditions apply

Premium Natural Rubber Compounds

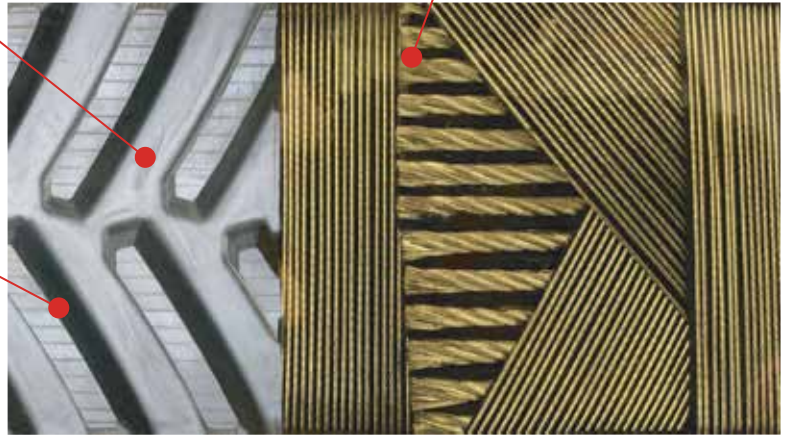
TankTuff uses only premium quality materials and solutions resulting in a rubber track with significant durability.

Strongest Cable System

Up to 6.5mm High Tensile Main Cable, four additional steel cable layers plus two additional fabric layers enables TankTuff to achieve remarkable strength.

Specially Designed Tread Bars

Our tread bars are designed to increase traction and clean out while reducing ground disturbance and vibration.



Our TankTuff Mid-Rollers are now available for a wide range of machines.

- New Mid-Rollers
- No Core Exchange
- Injection Molded
- Heat Resistant
- Natural Rubber
- Extend Track Life

